



SCHOOL COUNSELOR LEADERSHIP NETWORK

R I V E R S I D E C O U N T Y

ON-THE-GO WEBINAR SERIES

ON-THE-GO WEBINAR SERIES

R I V E R S I D E C O U N T Y

LEADERSHIP NETWORK

SCHOOL COUNSELOR



**SCHOOL COUNSELOR
LEADERSHIP NETWORK**
RIVERSIDE COUNTY
ON-THE-GO WEBINAR SERIES

QuestBridge Best Practices for Increasing National Student College Match

**Riverside County Office of Education
College and Career Readiness
School Counselor On-The-Go Series**

College & Career Readiness Unit

Meet Our Team



Catalina Cifuentes
Executive Director



Gil Compton
Director I



Matt Elder
Director I Cal-SOAP



Yuridia Nava, Ed.D.
Coordinator



Erika Bennet
Coordinator



SCHOOL COUNSELOR
LEADERSHIP NETWORK
RIVERSIDE COUNTY
ON-THE-GO WEBINAR SERIES

Virtual Meeting Tips

- This meeting is being recorded so that others may listen to it at a later time for reference and will be uploaded to the RCEC YouTube page as well as www.rcec.us once you log in to access the content of the webinar series.
- Please use the chat feature to ask your questions. We capture a Q&A during each session and we make every effort to answer all questions live.

****Every effort has been made to ensure the security of this webinar from “zombombombers” but in the event that we experience that, please stay calm and we will resume as soon as the technical difficulties have been resolved.****



Paula Riesenbeck
High School Counselor
Temecula Valley Unified School District

I am currently in my 15th year as a school counselor. I've worked at both the middle school and high school level. I have experience working with students from diverse backgrounds and socioeconomically disadvantaged students.



Mark Lim
High School Counselor
Ramona High, Riverside Unified School District

This is my 15th year as a high school counselor in Riverside Unified. Prior to that, I was a middle school counselor and teacher for 11 years in Ontario-Montclair School District. I work with AVID and non-AVID students of all backgrounds.



**SCHOOL COUNSELOR
LEADERSHIP NETWORK**
RIVERSIDE COUNTY
ON-THE-GO WEBINAR SERIES

QuestBridge College Prep Scholars

- A program designed to prepare high school juniors for the college admissions process
- The QuestBridge College Prep Scholars Program provides students with support, resources, and guidance
- Prepares students for the National College Match application
- Students who are selected as College Prep Scholar are 5 times more likely to be awarded the College Match Scholarship



QuestBridge College Partners

FIND YOUR FIT!





Eligibility Requirements

- U.S. citizens, permanent residents, or a high school student in the U.S., regardless of citizenship status
- Academic Achievement
 - High achieving students who are enrolled in the most challenging courses offered
 - Demonstrate strong writing skills and intellectual curiosity
- Financial Qualifications
 - Typically less than \$65,000
- Personal Circumstances
 - Strong character and resilience
 - Leadership and extracurricular activities



**SCHOOL COUNSELOR
LEADERSHIP NETWORK**
RIVERSIDE COUNTY
ON-THE-GO WEBINAR SERIES



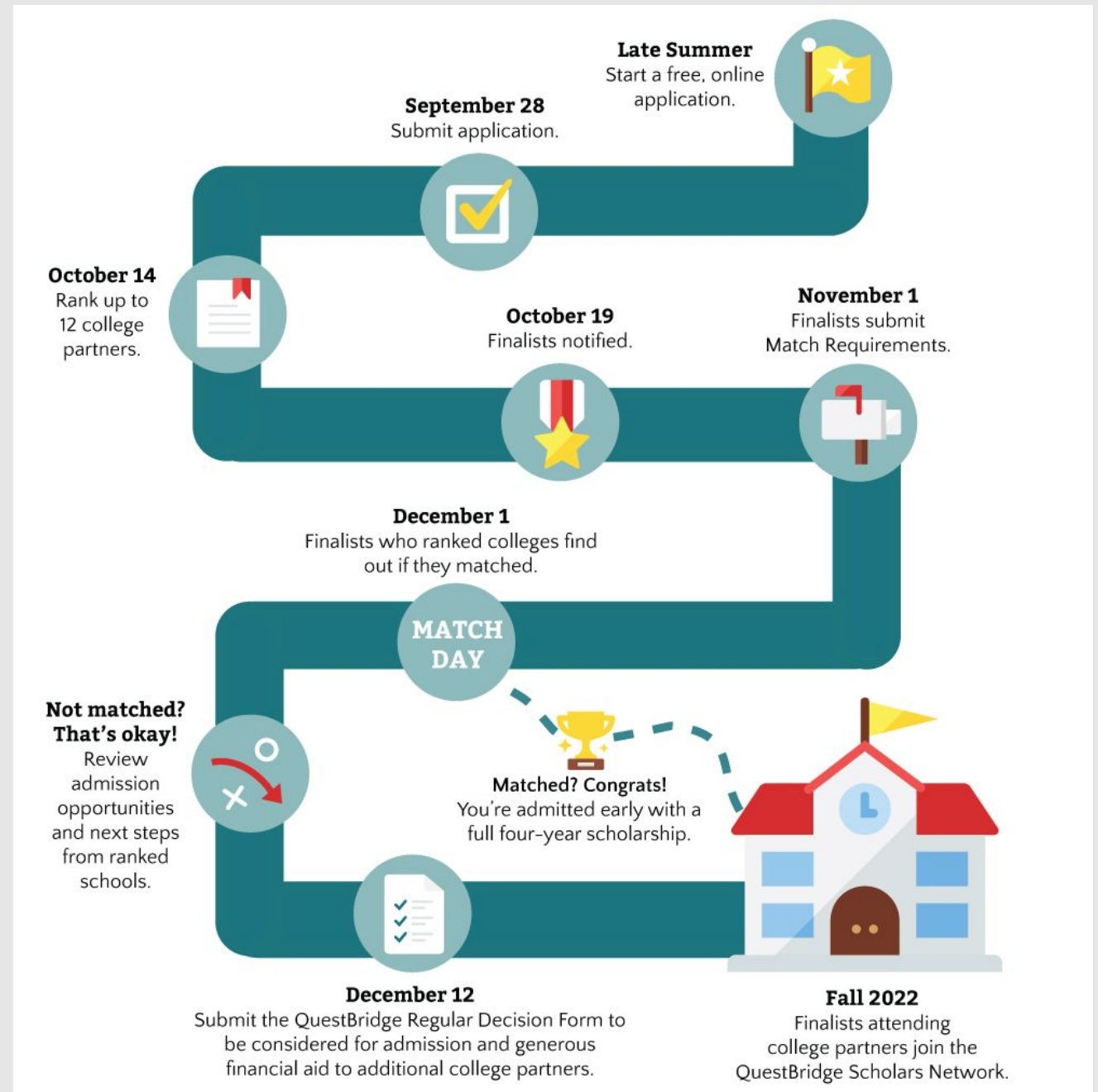
2021 College Prep Scholar Profile

3,908 Selected Scholars

- 82% free or reduced lunch
- 92% household income less than \$65,000
- 3.92 average unweighted GPA
- 89% ranked in the top 10% of their graduating class
- 77% scored above 1270 on the SAT or 26 on the ACT, if reported

Program Timeline

- February: Application opens
- March: Application deadline
- April: College Prep Scholars selected and awarded summer opportunities



College Prep Scholars Application

- Household and financial information
- Academic testing and honors
- Recommendation from a teacher (core teacher)
- Writing (essay and short answer)
- Activities



CHECKLIST

| | |
|-------------------------------------|-------|
| <input checked="" type="checkbox"/> | _____ |
| <input type="checkbox"/> | _____ |
| <input checked="" type="checkbox"/> | _____ |
| <input checked="" type="checkbox"/> | _____ |
| <input checked="" type="checkbox"/> | _____ |
| <input type="checkbox"/> | _____ |

Benefits of a College Prep Scholar

This may include:

- Scholarship to a college summer program
- \$1,000 to use towards the purchase of a laptop or college visits
- QuestBridge National College Admissions Conference
- Networking
- Feedback on application essay
- Specialized guidance/support for college application

Intentional Counseling Results

- Identify students by class rank after S1- Top 10%
- Identify low income students
- Send email to all students with information/brochure of College Prep Scholars program
- Follow up with students individually
- Encourage students to get help with essay through teachers
- Send follow-up email that includes parents
- AVID Junior classes and/or other pathway programs

Best Practices

- Counseling Department PLC
- Support team with deadlines
- Intentional College Counseling to identify strong, viable candidates
- Target special groups/programs (AVID, IB Diploma, AP Diploma, etc.)
- Celebrate student achievements and successes!



QuestBridge College Match: Who Can Apply

- High achieving students who have gotten mostly all A's in rigorous AP, Honors and/or IB courses; strong intellectual curiosity and capacity; top 5 to 10% class rank; average 1260 SAT or 27 ACT
- First generation college bound students (undocumented and documented citizens of the US); 76% of finalists are first-gen
- Low income students (typically Pell grant eligible, \$65,000 or less income for a family of 4)
- Demonstrated extracurricular and leadership accomplishments

Who Should Apply

- High achieving students who are considering applying to multiple top tier universities via Early Decision
- Students considering Ivy League schools and top private liberal arts campuses
- Students who are considering more than just the public university systems in California (UC's and Cal States)
- Students who seek a full ride scholarship that covers full tuition, room and board, and other educational costs

QuestBridge Partner Colleges/Universities

48 of the nation's top liberal arts colleges and universities.

Amherst, Barnard College, Boston College, Boston University, Bowdoin College, Brown University, California Institute of Technology, Carleton College, Case Western Reserve University, Claremont McKenna College, Colby College, Colgate University, College of the Holy Cross, Colorado College, Columbia University, Dartmouth, Davidson College, Denison University, Duke, Emory, Grinnell College, Hamilton College, Haverford College, Macalester College, Middlebury College, MIT, Northwestern, Oberlin College, Pomona College, Rice University, Princeton, Scripps College, Stanford, Swarthmore College, Tufts University, USC, University of Notre Dame, University of Virginia, Vanderbilt, Vassar, Washington and Lee University, Washington University in St. Louis, Wellesley Williams College, Wesleyan University, Yale

Pathway to a Top College – How it Works

NATIONAL COLLEGE MATCH:

- Late Summer prior to Senior year – start free, online application
- Submit online application by late September deadline
- Mid-October – complete ranking form of up to 12 QuestBridge partner schools
- Finalists notified in late October
- Finalists submit Match Requirements (Binding Early Decision)
- Finalists notified if they are matched with Partner school by Dec. 1st
- If matched on Dec. 1st, early admittance with full scholarship award
- Those not matched can still be considered for admission and generous financial aid by submitting QuestBridge Regular Decision application in mid December.

Identifying Students

- Query a list of your top students (4.0 GPA and above)
- Ensure candidates participate in free and reduced lunch program
- Query a list of Seniors who are ranked in the top 5 to 10% of their class
- Follow up with students individually
- Counsel students on the list of opportunities available through QuestBridge Partner schools and discuss the college options
- Before application deadline: review essays, connect with English teachers willing to proofread essays, ensure recommendations are submitted (one counselor and two academic teachers)
- Some teachers may know of outstanding candidates
- Consult with counseling team of viable candidates

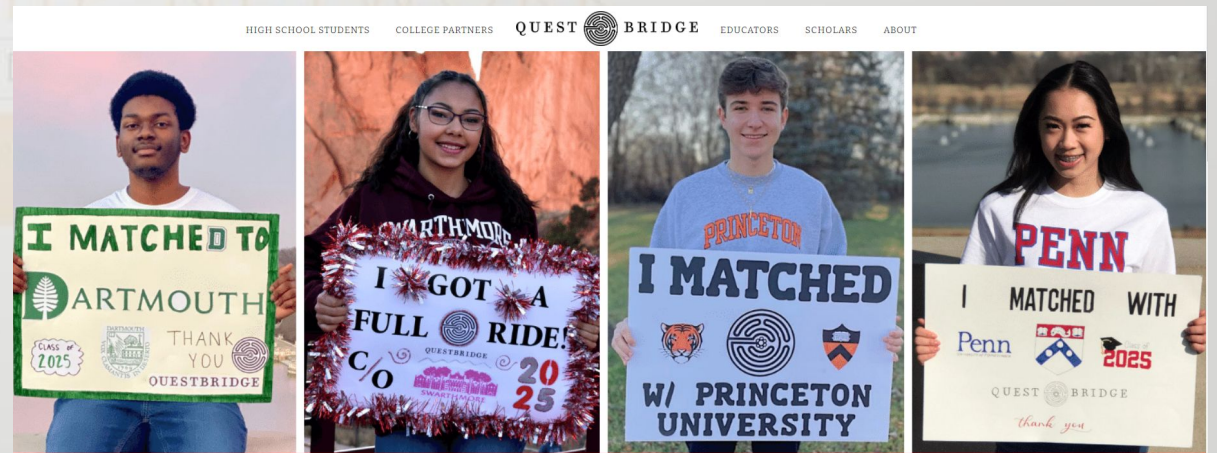
Past Winners from Ramona High – Riverside Unified

- Carleton College (1 Match)
- Washington and Lee University (1 Match)
- University of Notre Dame (Class of 2015, 2 Matches)
- University of Pennsylvania (Class of 2019, 1 Match)
- University of Southern California (Class of 2019, 1 Match)
- Princeton University (Class of 2021, 1 Match)
- Claremont McKenna College (Class of 2021, 1 Match)
- Some years we have two winners, or one winner, or none
- ***During COVID, we had TWO QuestBridge Scholars***



Chaparral High School – Temecula Valley Unified

- Class of 2022: QuestBridge Match Recipient; Wesleyan University
- Class of 2022: QuestBridge Match Finalists (3)
- Class of 2019: College Prep Scholar, QuestBridge Match Finalist
- Class of 2018: QuestBridge Match Recipient; Washington and Lee University
- Class of 2017: College Prep Scholar



Relevant QuestBridge Information

- Average QuestBridge scholarship amount based upon 4-year cost of attendance at QuestBridge Partner schools: \$300,000 to \$350,000
- Extremely competitive scholarship – annually over 20,000 applicants
- Publicize National College Match program through AVID Senior class presentations
- Ana McCullough QuestBridge Co-Founder and CEO amccullough@questbridge.org



Questions

SCHOOL COUNSELOR
LEADERSHIP NETWORK
RIVERSIDE COUNTY
ON-THE-GO WEBINAR SERIES

We are here to support you!

Please reach out to College and Career Readiness with any needs at your school site, professional development topics, or general questions at:

Dr. Yuridia Nava

ynava@rcoe.us

thank you!